

Welcome to the AccessibilityOnline Webinar Series



A collaborative program between the
ADA National Network and the
U.S. Access Board



The Session is Scheduled to begin at 2:30pm Eastern Time
We will be testing sound quality periodically

Audio and Visual are provided through the on-line webinar system. This session is closed captioned. Individuals may also listen via telephone by dialing 712-432-3100 code 930098 # (This is not a Toll Free number)

The content and materials of this training are property of the US Access Board and the Great Lakes ADA Center and cannot be used and/or distributed without permission. This program is funded through a contract agreement with the U.S. Access Board. For permission to use training content or obtain copies of materials used as part of this program please contact us by email at adata@adagreatlakes.org or toll free (877)232-1990 (V/TTY)

www.AccessibilityOnline.org



Webinar Features

- **Closed captioning:** Click CC icon (located in the panel labeled "Audio and Video" on your screen) and adjust the captioning box as needed for font size.
- **Customize your view:** You can resize the whiteboard where the Presentation slides are shown to make it smaller or larger by choosing from the drop down menu located above and to the left of the whiteboard. The default is "fit page"

2



Webinar Features (con't)

- **Asking ?'s:** Highlight "GreatLakes" in the participant list and "right click" on your mouse to send a private message. Type your message into the chat area that appears. The question will be viewed by all moderators. (Keyboard - F6, Arrow up or down to locate "GreatLakes" and select to send a message)
- **Emotions/Hand-raising:** Please do not use these features during this session unless instructed by the presenter.

3

Presenters



Peggy Greenwell



Bill Botten

U.S. Access Board

4



Accessible Amusement Rides

Session Agenda

- Background & Effective dates
- Scoping provisions
- Technical provisions
- Transfer research
- Other related provisions
- Questions

UNITED STATES ACCESS BOARD

5

Background and Effective Dates



6

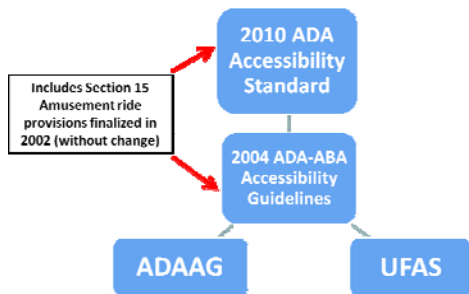
Guideline Development

- Recommendations from Recreation Access Advisory Committee (RAAC)
- Public comment and input from ride manufacturers, designers, operators, and patrons
- Final rule issued in 2002
- Provisions folded into the 2004 ADA-ABA Accessibility guidelines



7

Updated Accessibility Guidelines and Standards

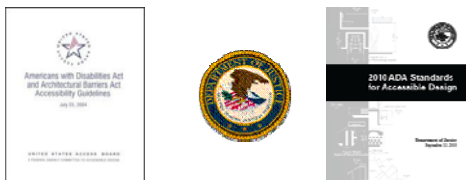


UNITED STATES ACCESS BOARD

8

New ADA Standards

DOJ's 2010 standards
(mandatory March 15, 2012)



Based on the Board's ADA-ABA Guidelines
(2004)

UNITED STATES ACCESS BOARD

9

Locating provisions

Table of Contents

ADA Application and Scoping

ADA Chapter 1: Application and Administration

ADA Chapter 2: Scoping Requirements

ABA Application and Scoping

ABA Chapter 1: Application and Administration

ABA Chapter 2: Scoping Requirements

Technical Chapters

Chapter 3: Building Blocks

Chapter 4: Accessible Routes

Chapter 5: General Site and Building Elements

Chapter 6: Plumbing Elements and Facilities

Chapter 7: Communication Elements and Features

Chapter 8: Special Rooms, Spaces and Elements

Chapter 9: Built-In Elements

Chapter 10: Recreation Facilities

**234
&
1002**

10

Effective Date

- Start of physical construction or alteration on or after March 15, 2012

UNITED STATES ACCESS BOARD

11

Definitions

- *Amusement ride* – A system that moved persons through a fixed course within a defined area for the purpose of amusement
- *Amusement ride seat* – A seat that is built-in or mechanically fastened to an amusement ride intended to be occupied by one or more passengers.
- Unique attractions

12

Rides not addressed

- Rides without seats
- Rides designed for small children
- Rides controlled by the rider
- Mobile and portable rides

UNITED STATES ACCESS BOARD

13

Rides without seats



14

Rides designed for small children



15

Rides controlled by the rider



16

Other requirements

- Accessible route
- Accessible load/unload areas



UNITED STATES ACCESS BOARD

17



Mobile and portable rides

- Set up for short periods of time
- Regularly assembled and disassembled
- Covered entities required to provide general nondiscrimination opportunities to individuals with disabilities
- Required to be on an accessible route



UNITED STATES ACCESS BOARD

18

Alterations to Existing Rides

- Accessible route to load or unload areas of ALL altered rides
- No changes required to the ride itself unless the **structural or operational characteristics of the ride are altered to the extent that the amusement ride's performance differs from that specified by the manufacturer**

UNITED STATES ACCESS BOARD

19

Existing rides and facilities



20

Requirements for Existing ADA Facilities

- Title II — Program accessibility
- Title III — Readily achievable barrier removal

For more information, contact DOJ @ 800 514-0301

21

Safe Harbor – Existing Facilities

- Elements that comply with 1991 Standards do not need to be modified to meet the 2010 Standards unless those elements are altered on or after March 15, 2012.

Safe Harbor does not apply to elements in existing facilities that were not subject to specific requirements in the 1991 Standards

For more information, contact DOJ @ 800 514-0301

22

Elements in 2010 Standards Not Subject to Safe Harbor

- | | |
|---|---|
| (A) Residential facilities and dwelling units | (I) Saunas and steam rooms |
| (B) Amusement rides | (J) Swimming pools, wading pools, and spas |
| (C) Recreational boating facilities | (K) Shooting facilities with firing positions, |
| (D) Exercise machines and equipment | (L) Miscellaneous. |
| (E) Fishing piers and platforms | (1) Team or player seating |
| (F) Golf facilities | (2) Accessible route to bowling lanes |
| (G) Miniature golf facilities | (3) Accessible route in court sports facilities |
| (H) Play areas | |

For more information, contact DOJ @ 800 514-0301

23

Tax Incentives for Improving Accessibility



- Section 44 of IRS Code
- Tax credit - maximum credit \$5,000
- Tax deduction – maximum \$15,000

UNITED STATES ACCESS BOARD

24

Amusement Ride Scoping



25

Access Options

- One of the following per ride:
- Wheelchair space OR
- Ride seat designed for transfer OR
- Use of a transfer device
- YOUR CHOICE



UNITED STATES ACCESS BOARD

26

Accessible routes

Serving
EACH ride

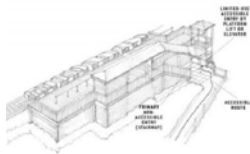


UNITED STATES ACCESS BOARD

27

Accessible routes

- If structurally or operationally infeasible -
 - 1:8 max slope in load/unload or on ride
 - handrails not required
- LULA's permitted
- Maneuvering space



UNITED STATES ACCESS BOARD

28

Signage

- At the entrance of the queue/waiting line for each accessible ride
- Identify the type of access provided (e.g., rides with wheelchair spaces or transfer rides).
- Where the route to the accessible load area is different for persons with disabilities than for other riders, signage must indicate the location of the accessible load area

UNITED STATES ACCESS BOARD

29

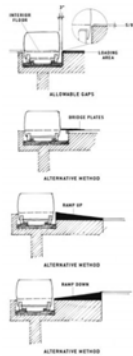
Amusement Rides with Wheelchair Spaces



30

Rides with wheelchair spaces

- Approach
- Load/unload areas
- Floor or ground surface
- Gaps



UNITED STATES ACCESS BOARD

31

Rides with wheelchair spaces

- Width/length
- Side entry

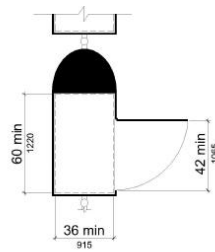


Fig. A9
Wheelchair Spaces - Side Entry

UNITED STATES ACCESS BOARD

32

Rides with wheelchair spaces

- Protrusions

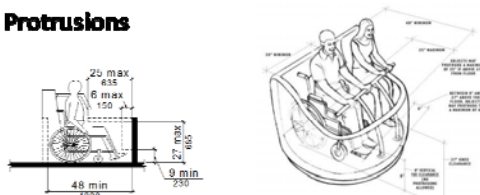
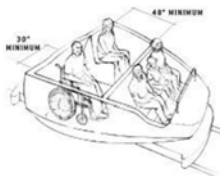


Fig. 58
Protrusions in Wheelchair Spaces

33

Rides with wheelchair spaces

- Companion seats – interior width > 53"
- Shoulder to shoulder



WHEELCHAIR SPACE WITH COMPANION SEATING
UNITED STATES ACCESS BOARD

34

Rides with wheelchair spaces



UNITED STATES ACCESS BOARD

35

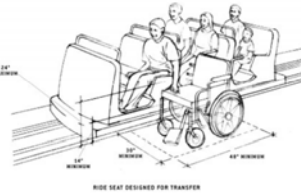
Ride seats designed for transfer



36

Ride seats designed for transfer

- One transfer to ride seat
- Clear floor or ground space



UNITED STATES ACCESS BOARD

37

Ride seats designed for transfer

- Transfer entry
- Wheelchair storage space



UNITED STATES ACCESS BOARD

38

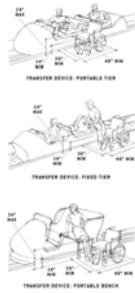
Transfer practice vehicle or seat



UNITED STATES ACCESS BOARD

39

Other options



UNITED STATES ACCESS BOARD

40

Use of a Transfer Device



41

Transfer devices for use with amusement rides

- Clear floor or ground space
- Transfer height
- Wheelchair storage space



UNITED STATES ACCESS BOARD

42



Transfer devices



TRANSFER DEVICE: PORTABLE TIE



TRANSFER DEVICE: FIXED TIE



TRANSFER DEVICE: PORTABLE DEVICE

43



Transfer devices



44

Transfer Devices



45

Wheelchair storage space

- A 30" X 48" space in or adjacent to load/unload platform
- May not overlap any required means of egress or accessible route



UNITED STATES ACCESS BOARD

46

Transfer Research



47



Transfer Research



Study: The Impact of Transfer Setup on the Performance of Independent Wheelchair Transfers

120 Subjects capable of independent transfer

Variety of configurations tested – including distance from seat

http://herl.pitt.edu/ab/transfer_assessment_report.html

48



Transfer Research



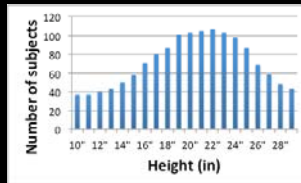
Height
adjusted and
spacers added
at floor level

49



Transfer Research

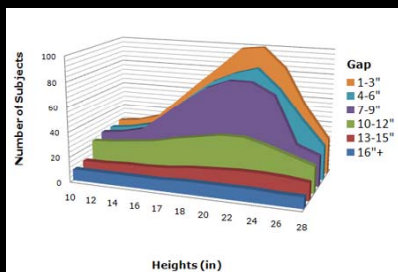
- 92% of users could transfer to a surface at a height similar to the median WMD seat to floor height of the sample (22 in)
- 43% could transfer to a surface 14" high and 85% could transfer to a surface 24" high with respect to floor when no gaps or obstacles were present.



50



Transfer Research



51



Transfer Research

Other issues -

- Handholds and grab bars
- Maneuvering space
- Transfer step height

52

Other facility provisions

53

CHAPTER 10

Recreation Facilities:

- amusement rides
- recreational boating facilities
- exercise machines
- fishing piers and platforms
- golf facilities
- miniature golf facilities
- play areas
- swimming pools, wading pools, and spas



UNITED STATES ACCESS BOARD

54

Surfaces

must be: firm, stable, "slip-resistant"

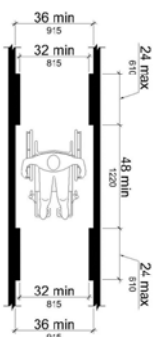


Loose materials generally not compliant
(unless properly treated) swimming pool lift
photo

55

Accessible Routes

- Maximum running slope
- Cross slope
- Changes in level
- Minimum width



56

Parking

Clarifications/ revisions:

- Exempt: parking for buses, trucks, delivery and law enforcement vehicles, impound
- Marking of access aisles
- Sign height (60" min.)
- Van spaces: increased scoping (1:6 instead of 1:8)
- Angled van spaces (aisle on passenger side)



57

Drinking Fountains

Where provided, 2 units required (wheelchair & standing access)

- alternative: single “hi-lo” unit
- multiple installations: 50% of each type



58

Visual Signs

- “conventional form”
- character proportion/spacing
- character height based on viewing distance
- location (40” min. height)
- stroke thickness
- line spacing
- finish & contrast



UNITED STATES ACCESS BOARD

59

Assembly Areas

Wheelchair Spaces

lower scoping for assembly areas with more than 500 seats:



- 501 – 5,000 seats: 1 space/ every 150 seats (instead of 1%)
- > 5,000: 0.5% scoping

60

Assistive Listening Systems

Required where:

- audible communication = integral to use of the space and
- audio amplification
- Courtrooms



Not triggered by fixed seating or occupant load

New technical criteria (sound pressure level, signal-to-noise ratio, peak clipping level)

61

Leisure rivers

- One means of access
- Pool lift, sloped entry, or transfer system



UNITED STATES ACCESS BOARD

62

Wave action pools

- One means of access
- Pool lift, sloped entry, or transfer system
- Clear width of handrails on slope entry does not apply



UNITED STATES ACCESS BOARD

63

Water slides

- Access not required to the top of the water slide
- Accessible route required to edge of catch pool



UNITED STATES ACCESS BOARD

64

Water Play Components



Ground level access
and transfer access to
elevated play
components required



65



Dining Surfaces (226)

- Access to at least 5%, not fewer than 1
- Knee clearance required
- Tops = 28 inches minimum – 34 inches maximum



66

Sales & Service Counters (227 and 904.4)

227 Scoping

- Counters – 1 of each type

904.4 Technical

- 36 inches maximum
- Accessible part same depth
- Parallel or forward approach
- No alternatives
- Exception for alterations
- Security glazing – voice communication



UNITED STATES ACCESS BOARD

67

Where to direct questions



U.S. Department of Justice

- Implementing regulation and additional requirements
- Requirements for existing facilities – title II & III

(800) 514-0301 (voice)

(800) 514-0383 (TTY)

www.ada.gov



U.S. Access Board

- 2010 Accessibility Standards for new construction and alterations

(800) 872-2253 (voice)

(800) 993-2822 (TTY)

(202) 272-0081 (FAX)

ta@access-board.gov

www.access-board.gov

68

Questions?

Highlight "GreatLakes" in the participant list and "right click" on your mouse to send a private message. Type your message into the chat area that appears. The question will be viewed by all moderators. (Keyboard - F6, Arrow up or down to locate "GreatLakes" and select to send a message)

69



U.S. Access Board

(800) 872-2253 (voice)

(800) 993-2822 (TTY)

E-mail: ta@access-board.gov

www.access-board.gov

UNITED STATES ACCESS BOARD

70

Technical Assistance Material



<http://www.access-board.gov/indexes/pubsindex.htm>

**Thank you for participating
in today's webinar**



Next scheduled session:

"Accessible Means of Egress"

February 7, 2012

www.AccessibilityOnline.org

877-232-1990 (V/TTY)

72
